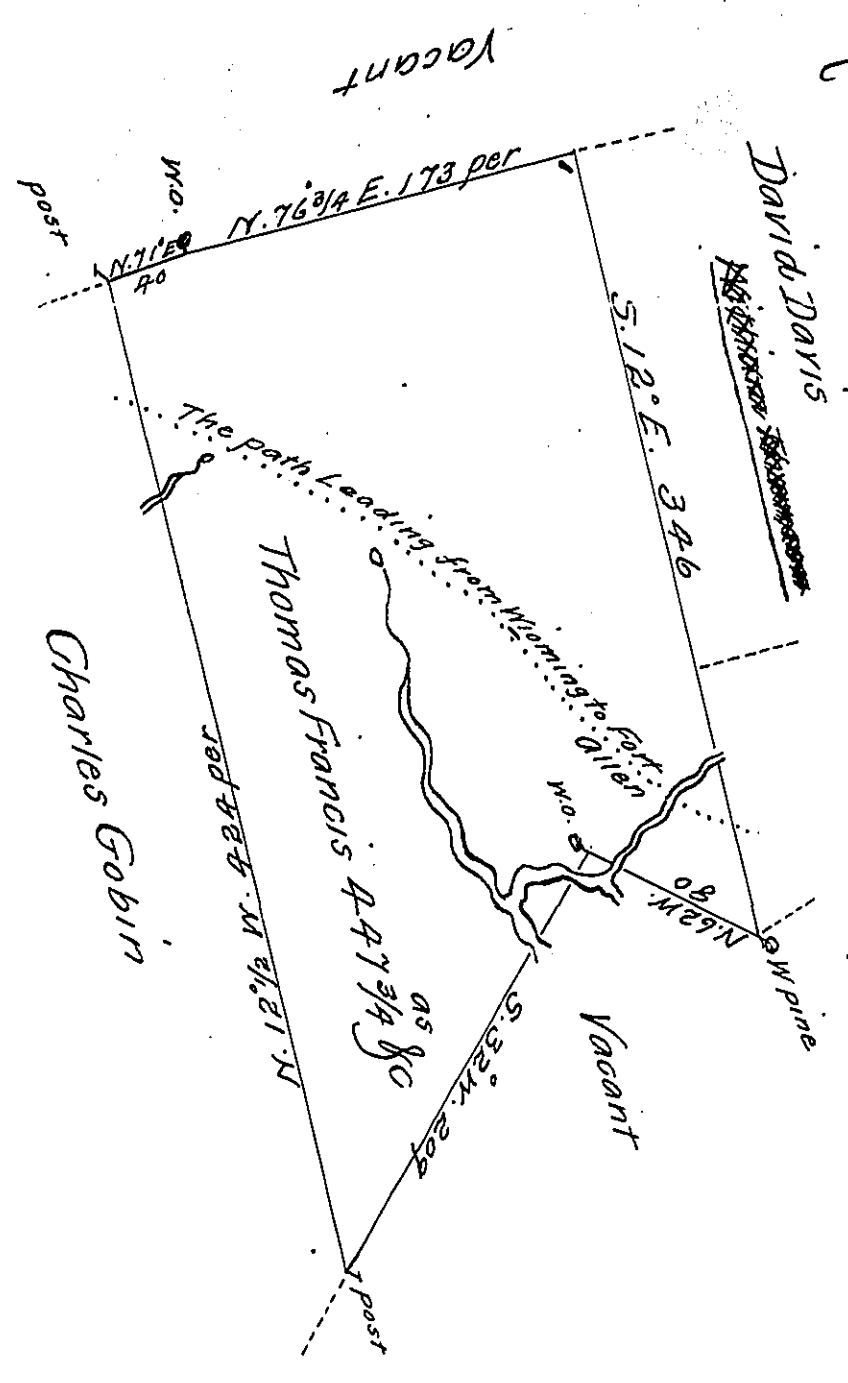


Sugar Loaf -
Luzerne -



A Draught of a tract of Land Called _____ Situate on Nescopeck Creek
 Joining Land Surr^d for Charles Gobin & others in Stoke Township
 Luzerne (formerly Northumb^d) County Containing four Hundred &
 forty seven Acres $\frac{3}{4}$ & Allow^e of Six p Cent for roads & Surveyed
 for Tho^s Francis the 12th Day of April 1787 in pursuance of a
 warrant Dated the 12th Day of July 1784
 by W^m Gray D.S.

To John Lukens Esq^r }
 Surr^t Gen^l }

IN TESTIMONY that the above is a copy of the original remaining on file in
 the Department of Internal Affairs of Pennsylvania, made
 conformably to an Act of Assembly approved the 16th day of
 February, 1833, I have hereunto set my Hand and caused
 the Seal of said Department to be affixed at Harrisburg,
 this Twenty Seventh day of July 1911

Henry Howell,
 Secretary of Internal Affairs.